



CORPORATE PROFILE

www.smr.co.za



*Working
together as a
team to achieve
common goals.*



BACKGROUND

SMRM Holdings engages in activities across the Property, Mining Equipment Supply, and Energy value chain across the country.

We are a diversified investment holding company with ventures and operations in the industrial, infrastructure and property sectors, including strategic investments in a portfolio of unlisted companies.

SMRM Holdings founded in 2012 as a micro supplier in the mining industry before rebranding and registering as a holdings company recently. With our roots in South Africa, **SMRM Holdings** is a 100% Black owned and led organisation, with varied interests across the country.

Being a very future-forward organisation, that is digitally focussed, **SMRM Holdings** business operations are hinged on 3 basic principles: sustainability, innovation and smart solutions.

For us, sustainability is the ability to meet the needs of the present without diminishing opportunities for the future.



As a values-led organisation that focusses on delivering sustainable smart-solutions, with lasting commercial, social and environmental benefit, we believe in addressing today's needs while taking responsibility for those of future generations.

BACKGROUND

21+

Full time employees and consultants

12

Years in operation

100%

**100% Black Owned
100% Black Woman Owned**

4

Long-term contracts underway

4

Mining Consultancy Project completed

OUR ETHOS

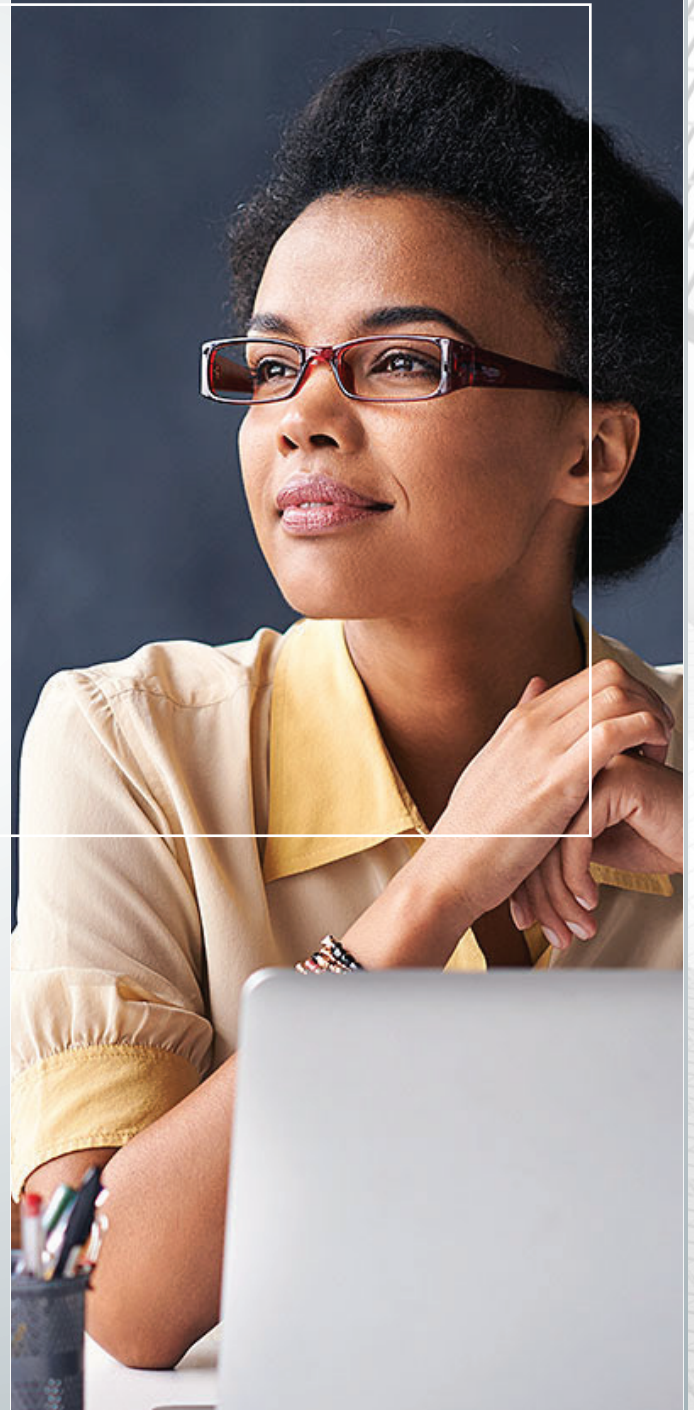
Our value system is based on the principle value of professionalism.

We are passionate about the services and products we provide and seek to incorporate our core values in everything we do.

Wherever around the country we operate, **SMRM Holdings** strives to live by its core values of:

- People
- Excellence
- Transformation
- Customer Focus
- Innovation
- Integrity and
- Performance

Our Social Economic Development (**SED**) strategy is about empowering the communities in our project catchment areas with resources, support and skills that ultimately lead to better lives.



OUR ETHOS



ENVIRONMENT

The group is committed to maintaining a clean environment and as a consequence believes this will create the ability to operate in a disciplined and sustainable manner over the long term which is fundamental to maintaining a competitive advantage and honouring the deliverables of corporate governance.

MISSION

- To offer world-class operational and logistical services, and be the preferred supplier to our clients
- In association with reputable manufactures we strive to add value to the mining and energy industries through the supply of high-quality process equipment solutions
- Provide essential cost-effective solutions for the mining and energy industries
- Create sustainable employment to benefit previously disadvantaged communities

VISION

Our vision is to be in the forefront of sustainable businesses and to become industry leaders in developing smart solutions.

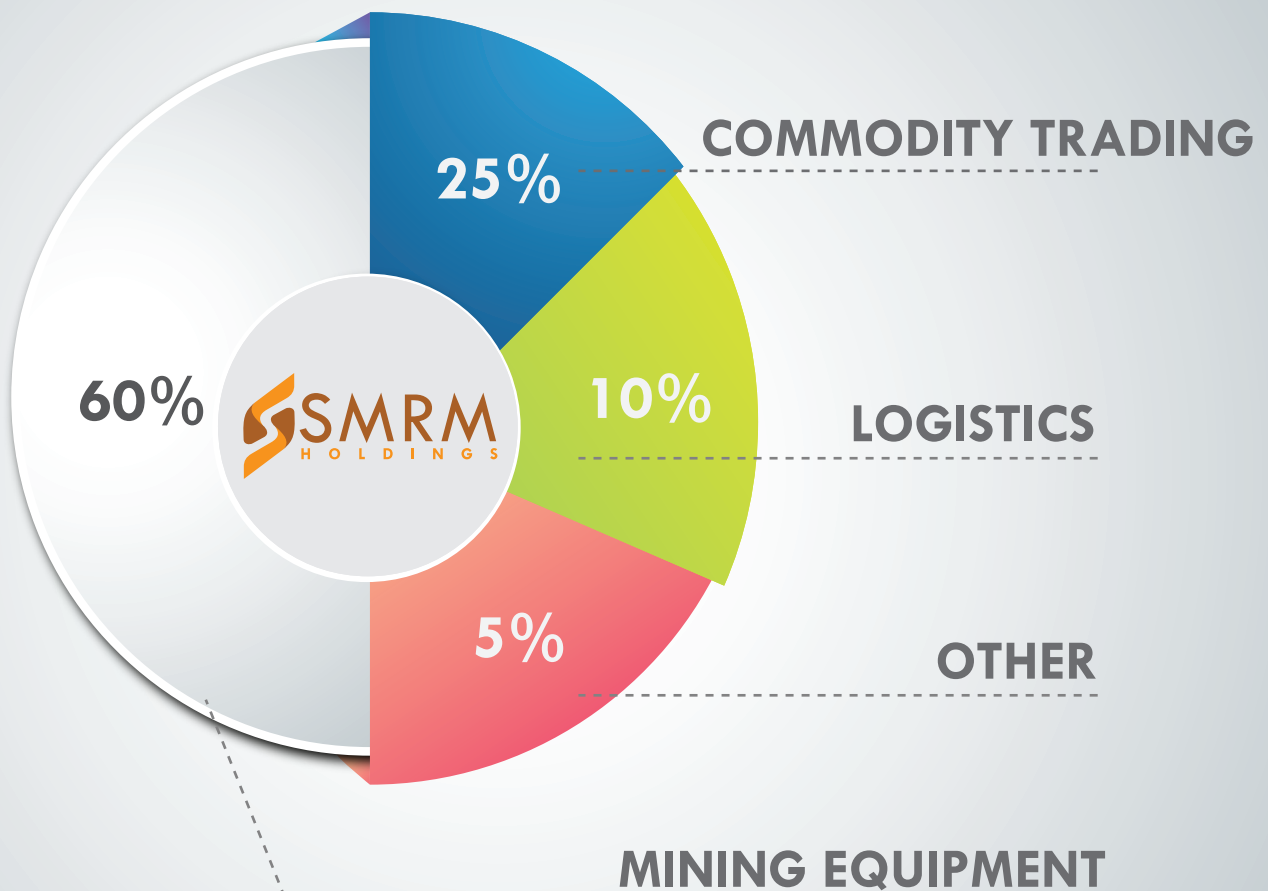


*We've learnt
that the harder
you work, the more
bountiful the harvest.*



OVERVIEW

OUR INVESTMENTS



We have a well established growth strategy and clear strategic priorities focused on developing our operations and running our business in a responsible way. Our goal is to build a business with a production and cash flow profile that is capable of funding major investment programme.

INVESTMENTS



COMMODITY TRADING

- Sourcing of Run of Mine Coal for export and domestic market supply
- Sourcing of washed product for export and domestic market supply
- Directly placing product to Market



MINING

- Plant hire
- Earth moving equipment
- Earthworks equipment
- Spirals and accessories
- Cyclones and accessories
- Hydrosizers and accessories
- Launderers, Hoses and Pumps



LOGISTICS

- Pit to Port product transportation services
- Loading of material on site
- Quality control
- Safe and secure transportation of materials to train load out station or directly to port
- Supporting of SMME through subcontracting (capacity boost) by linking with majors
- Providing holistic logistical solutions



STRATEGY

- Strategically position the group such that its diverse product and service offering makes **SMRM Holdings** service provider of choice.
- Strengthen existing business relationships by providing an outstanding level of service and a competitive product offering.
- Enhance existing products and services offered to a diverse client base to better suit their requirements.

COMMODITY TRADING



As a leading player in the industry, we take pride in facilitating the seamless movement of coal resources to meet global demand and support local energy needs. Our commitment to excellence, reliability, and sustainability sets us apart, ensuring that you have a partner you can depend on for your coal trading requirements.

Global Export Expertise:

Export of high-quality coal to meet the energy demands of international markets.

Local Supply Solutions:

Catering to domestic energy requirements, we provide a reliable supply chain for coal within our borders.

Variety of Coal Grades:

Offering a diverse range of coal grades to cater to different industrial needs.

Environmental Sustainability:

Embracing our responsibility to the environment, **SMRM Holdings** is dedicated to sustainable coal trading practices.



MINING



SMRM Holdings started with providing specialized mining systems and equipment in 2012. Owners and operators around the country trust our engineered solutions that leverage our experience acquired over more than a decade.

Our portfolio ranges from:

- IPCC systems
- In-pit and underground conveying
- Spreading or dumping
- As well as various auxiliary equipment
- OEM Capacity link
- SMME capacity building





We specialize in providing seamless, reliable, and efficient transportation solutions for the coal industry. Whether you are involved in coal mining, trading, or energy production, our comprehensive logistics services are designed to meet your specific needs, ensuring the smooth flow of coal from source to destination.

This involves:

Transportation Management:

To ensure timely and cost-effective delivery.

Modal Flexibility:

Benefit from our flexibility in utilizing road, rail, and sea transportation, allowing us to adapt to varying distances and terrain conditions.

Supply Chain Visibility:

Stay informed and in control with our advanced supply chain visibility tools.

Warehousing and Storage:

Whether you need short-term storage during transit or long-term warehousing, our facilities are equipped to meet your requirements.

Environmental Compliance:

SMRM Holdings is always striving towards minimizing the ecological impact of coal transportation and contributing to sustainable practices within the industry.

COMPETENCIES



- Strong SMME understanding
- SMRM identified gaps in the SMME ecosystem
- The team is highly experienced
- OEM's and funders goodwill
- SMRM successful involvement in Mining and Logistics

MINING PROJECTS

- Source Yellow equipment for SMME's with capacity constraints
- SME link to OEM for yellow equipment

Logistics

1. Sub-contracting opportunities
- Sourced more than 50 trucks for hauling coal mainly from mines to RBCT from various suppliers
- Assisting with ops and stakeholder management to ensure success of the assignment
2. Operating own trucks to port
3. Port allocation leasing to various customers

Product Sourcing

Source coal at various stages (ROM, Washed product, Fines) for pick up at mine gate

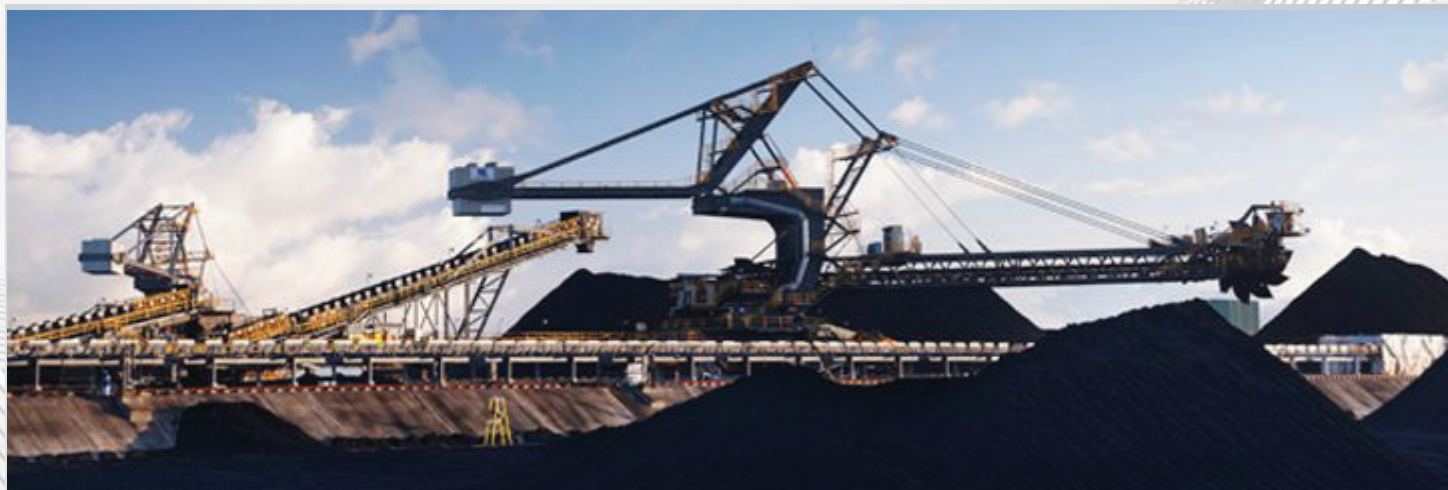




*We believe in
dreaming, but we
also know that
dreams don't work
unless you do.*



OUR TEAM



Our team offers the creative vision, professionalism and expertise to create the best – with a constant eye towards detail, quality, originality and results. We aim for your targets and offer extended service to all our clients to build a relationship of a lifetime. With time we intend to establish our service on a continental platform, which will increase the knowledge of our service.

WHAT MAKES US DIFFERENT?

- Proven, demonstrated results
- We are driven to ensure safety of our people, procedures and operations, and minimising environmental impact
- We are geared at building long-term relationships with local governments, communities and key stakeholders
- We continuously engage in developing a strong team with excellent commercial, technical and financial skills

We're innovative thinkers who see opportunities where others see nothing. We believe that success is not what you have -
it's what you do with what you have.

TEAM MEMBERS

Ms. Sara Makete
Chief Executive Officer

Sara is an executive in charge of SMRM Holdings. She has extensive experience in business financial management, supply chain and transformation elements of BBBEE in the mining industry. Sara has worked for large mining companies as a senior manager as well as junior and mid-tier mining companies in across various commodities in South Africa.

Mr. Sambula Chabalala
Technical & Operations

Sambula is a seasoned leader with extensive expertise in Reporting, Data Analytics, and Quality Management. His career spans diverse sectors such as mining, automotive, and rail, with a significant focus on the coal mining industry. Known for his project oversight and team leadership, Sambula has driven performance improvements and streamlined reporting systems. He is also academically qualified, further enhancing his ability to lead strategic initiatives across business and operations.

Mr. Mashudu Netshipale
Business Development & Advisory

Mashudu is an executive with over twenty (20) years' experience in the South African mining industry. He is a versatile executive who has worked in various managerial and executive roles, including operations, projects, sales and marketing and other support functions.

This exposure to the various aspects of the mining value chain has provided him with a good appreciation of the end-to-end mining processes. Mashudu has worked for various small, medium and large mining companies covering coal, manganese and other commodities.





ADDRESS:

22 Magwa Crescent
Gateway West Offices
Waterfall City, 1685

TEL: (010) 009 5410

EMAIL: info@srm.co.za

Reg. no. 2022/294389/07

www.srm.co.za

